

## Holy Family Halewood

### Year 1 and Year 2 Art & Design Superheroes

**Emotions:** describes how people feel.



## Learning Objectives:

- To be able to create 3D human forms by bending wire into a superhero shape and making legs, arms and a body using plasticine
- To create different facial expressions by altering the eyes, mouth and eyebrows
- To be able to create a large piece of collaborative artwork, drawing around a person in a superhero pose, before adding shapes to the piece and materials to add texture
- To be able to create a large piece of collaborative artwork, blending paint colour washes into the piece, blending two primary colour washes together to make a secondary colour, creating a dot matrix effect in the style of Lichtenstein and adding shadows by outlining the figures in black
- To be able to create a large piece of collaborative work, using pastels to add colour in areas not filled with collage or dots, blending two primary colours to make a secondary colour and shading tones.

## Artist Study and knowledge I will acquire:

**Cartoon style-** To draw in cartoon style I need to draw in bold and simple ways.



### Leo Baxendale

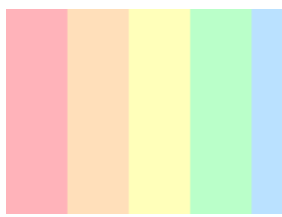
An English cartoonist who created characters for the 'Beano' Comic.



**Animation** is an illustration or drawing made into a moving film.



**Pastel Colours-** soft and light colours



### Roy Lichtenstein

An American artist, who was a leading figure in the Pop art movement.



**Dot Matrix:** a series of dots



### Key Vocabulary:

**Illustrator:** an artist who draws pictures for books.

**Pop art:** a simple art style which uses bright colours and everyday objects.

**Cartoon:** an illustration or animated film designed to be funny.

**Blend:** to gradually and gently join two colours, tones or images together.

**Dot matrix:** a series of dots

**Colour wash:** a very light layer of colour usually made using ink or paint.

**Comic:** a series of drawings which tells a story.

### Key Knowledge:

**Facial features:** are the part of the person's face such as their eyes and mouth

**Paint:** will look lighter when applied thinly

**Primary colours:** when mixed together will make secondary colours.

**To make pastel colours:** I need to add white to primary and secondary colours.

**Blending colours:** I need to mix at least two colours together.

**Materials used:** Pencil, paint, chalks, coloured pencils, oil pastels, charcoal, marker pen, plasticine