



# Holy Family School Newsletter - 31

Friday 25<sup>th</sup> June 2021

*With Christ at the centre, we live, love and learn together,  
reaching out to all. Together, with Jesus, we can do it!*



*'Only the best is good enough'*

## WELCOME BACK

I am sure you will all join us in welcoming back Mrs. Davies our SENDCO who returns to school following her maternity leave on Monday 28<sup>th</sup> June.

## SPORT'S DAY

Due to the closure of Y2 and Y3/4W class bubbles, we will only be having Foundation Stage (Nursery & Reception) Sport's Day on 30<sup>th</sup> June. Nursery can wear their own sportswear and Reception can wear their PE kits. Sport's Days for KS1 and KS2 will take place week beginning 12<sup>th</sup> July, more information will follow. We are still unfortunately, due to this Covid pandemic unable to offer the opportunity for parents to come and join us.

## SPORTS NEWS

We were absolutely devastated to receive the news this week from Knowsley Sports Partnership that all sports competitions have been cancelled! We were due to take part in the following competitions this week and next week:

Girls Football  
Athletics Event (Quad Kids)  
Y5 & Y6 Football Competition.



## TERM DATES 2021/2022

Please see the following information received by schools from Knowsley Council: Due to the Queen giving an additional bank holiday next year for her jubilee, many schools will already be on their half term breaks in the week commencing Monday 31<sup>st</sup> May 2022, but where the additional bank holiday falls in term time, schools should observe the Bank Holidays on Thursday 2<sup>nd</sup> & Friday 3<sup>rd</sup> June 2022 and may therefore need to prepare and make any amendments to their published term dates for the academic year 2021/22.

As we are already off during this time for our May half term, we will now break up for the Christmas holidays on Tuesday 21<sup>st</sup> December and NOT Wednesday 22<sup>nd</sup> December as published on our 2021/22 term dates on the school website to accommodate this extra day.

## SCHOOL EVENTS

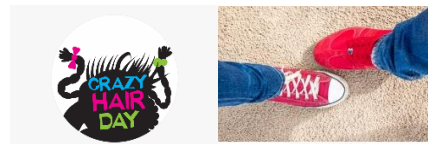
This week we welcomed Scoot Fit into school to train all the children ... and staff how to 'scoot' correctly! As many of you may have seen when dropping off or collecting your children, this event was spectacular, the music was booming, the children were fantastic, not even the damp weather could spoil it, it really was a disco on wheels (I know some parents enjoyed seeing Mr. Quigley joining in the dancing at home time)!! I am sure your children were still excited to tell you all about it when they got home from school. We have been asked by the company to monitor how many children come into school on a scooter on the day of the event and again how many come into school on a scooter following the day's training, please do try to encourage the children to make the effort to 'scoot', walk or cycle to school.



29<sup>th</sup> June 2021 - Yr 6 trip to Mountain Monkeys - This is based at Carr Mill Dam and the children will take part in a range of activities including:

Kayak  
Target Shooting - Archery, Rifle/Pistol Shooting.  
All risk assessments - insurance liability information etc. has been received by school for these events.

9<sup>th</sup> July 2021 - 'Fun Friday' Crazy Hair and Odd Shoe Day for all classes.



13<sup>th</sup> July 2021 - Party on the Playground for all class bubbles - Disco, Party clothes and Party food.



## BIKEABILITY

Please see information received from Bikeability:  
Please find this link to our holiday courses for any children who have missed out:

<https://www.bikeright.co.uk/courses/child-group/> Parents will need scroll down and enter 'Sefton Park' in the location box - Level 1&2 Training is listed from Wed 11<sup>th</sup> August onwards. Please ask parents to read what this entails - must have a bike and helmet, will require packed lunches/drinks etc as it is a full day course from 9am-3pm - so they know what they are signing up for. All courses are free.

There are also Child Group courses for Level 3 Bikeability and some Learn to Ride courses in various venues across Merseyside as well as our Adult 1-1's and Family Courses. These courses are free to ALL residents of Merseyside (age restrictions may apply) not just school children so please feel free to pass around - here is the link to our Merseyside Borough page: <https://www.bikeright.co.uk/sponsors/liverpool/> which lists all the courses we provide.

## SCHOOL UNIFORM

Please see below a flier for Kitted Out our preferred uniform supplier:



The flier for Kitted Out Schoolwear features a blue header with the 'Kitted Out' logo and icons for uniforms, school shoes, schoolbags, schoolbags, schoolbags, schoolbags, schoolbags, schoolbags. Below the header is a photograph of the store's exterior at 114 Allerton Road, Mossley Hill, L18 2DG. A red circular sign on the building says 'BUY UNIFORM ONLINE OR IN STORE'. The flier also includes a map showing the store's location, contact information (0151 733 5533, info@kittedoutschoolwear.co.uk), and the website www.kittedoutschoolwear.co.uk. It mentions that they are an official stockist for Holy Family Halewood and are open Monday to Saturday from 9:00am to 5:00pm.

## HALEWOOD UNI-WISE

We have also received the following information regarding uniform availability from Halewood Uni-Wise: Halewood Uni-Wise is open to anyone who has school aged children attending a Halewood school. They will be open on Saturday 26<sup>th</sup> June from 10.30 to 11.30a.m. to receive donations of good quality, washed and ironed items of uniform for local Halewood Primary and Secondary schools. They will then be open every Saturday from 3 July to 21 August inclusive 10.30 to 12.00 noon at St. Mary's Church Hillingdon Avenue/Leather's Lane for parents to go along to save yourselves a bit of money and do your bit for saving the environment!

## WHY WOULD A BUBBLE CLOSE?

For clarification on a close contact please see below the excerpt from Public Health Guidance below:

Who is a close contact?

a person who has had face-to-face contact (within one metre) with someone who has tested positive for coronavirus (COVID-19), including:

- being coughed on, or
- having a face-to-face conversation, or
- having skin-to-skin physical contact, or
- any contact within one metre for one minute or longer without face-to-face contact
- a person who has been within 2 metres of someone who has tested positive for coronavirus (COVID-19) for more than 15 minutes
- a person who has travelled in a small vehicle with someone who has tested positive for coronavirus (COVID-19) or in a large vehicle near someone who has tested positive for coronavirus (COVID-19)
- people who spent significant time in the same household as a person who has tested positive for coronavirus (COVID-19)

**A class bubble would close and the children would need to isolate, if a child or adult has had close contact with a positive case anytime from 2 days before onset of symptoms or if asymptomatic from the date of the test.**

## THANK A TEACHER DAY

Thank you to every member of school staff (Teachers, Support Staff, Office Staff, Site Manager, Cleaners and Welfare Staff) that have gone above and beyond to support pupils' education and wellbeing this year. Huge thanks to Mrs. Bates for the home-made scones too!



### COPPER CHALLENGE - DONUT PARTY

Well done to our Reception classes who brought in the most 'copper' for our 'Copper Challenge' with a fantastic £70.00! They have really enjoyed their 'Donut and Haribo' party donated by our PTA today!



### TIES AND BAGS

In school we have ties, rucksacks, book bags and P.E. bags for sale:



Prices are as follows:

Ties - elasticate and standard £4.50

P.E. Bags - £3.50

Rucksacks - £14.00

Book bags - £7.00

Please contact the school office if you need to purchase any of these items.

### ROBERTS RECYCLING

Thank you to everyone who managed to bring in a bag for Roberts Recycling this morning. The company collected all the bags and the overall weight total was 208kg which equates to £72.80 funds raised for our PTA!  
Thank you everyone!

### CONSIDERATE PARKING

We have once again received complaints from the residents of Ashton Close (the small close opposite our school main entrance) regarding parents parking across their driveways when dropping off or collecting children from school. Please be considerate when parking. The Arncliffe Centre car park is available to use during the drop off and collection times and even consider parking further away from the school by leaving earlier so that you can walk to school. For those of you who live local to the school, please consider walking to school rather than making the short journey in the car.



### RSE

In the week beginning 28<sup>th</sup> June, all classes from Reception to Year 6 will receive RSE (Relationships and Sex Education) lessons, age and stage appropriate. These lessons always take place in term 3. However, as you are aware, school was in Lockdown in term three last year, therefore we were unable to deliver these lessons appropriately. As a school, we are working hard to ensure that there is no 'lost learning', therefore each class will be taught not only their current year's content but their previous year too. For example, a child in year 4 will be taught the content for both year 3 and year 4.

Below, is a summary of the objectives that each year group will cover. For even more detail of the content, please look at our website. You will find our RSE Statement under the Catholic Life of the School tab.

#### **Foundation Stage**

<b>Topic</b>	<b>Objectives</b>
The wonder of being special and unique	*To recognise the joy of being a special person in my family *To recognise that we are all different and unique *the joy of being a special person in God's family

#### **Key Stage One**

<b>Year Group</b>	<b>Topic</b>	<b>Objectives</b>
Year One	We Meet God's love in our Family	*To recognise signs that I am loved by my family * To recognise how I am cared for and kept safe in my family * To celebrate ways that God loves and cares for us.



<b>Year Two</b>	<b>We Meet God's love in the community</b>	<ul style="list-style-type: none"> <li>*To recognise the joy and friendship of belonging to a diverse community.</li> <li>* To describe ways of being safe in communities.</li> <li>*To celebrate ways of meeting God in our communities.</li> </ul>
-----------------	--------------------------------------------	------------------------------------------------------------------------------------------------------------------------------------------------------------------------------------------------------------------------------------------------------

## Key Stage Two

<b>Year Group</b>	<b>Topic</b>	<b>Objectives</b>
<b>Year Three</b>	<b>How We Live in Love</b>	<ul style="list-style-type: none"> <li>*To describe and give reasons how friendships make us feel happy and safe</li> <li>*To describe and give reasons why friendships can break down, how they can be repaired and strengthened.</li> <li>*To celebrate the joy and happiness of living in friendship with God and others.</li> </ul>
<b>Year Four</b>	<b>God Loves us in our Differences</b>	<ul style="list-style-type: none"> <li>* To describe how we all should be accepted and respected</li> <li>*To describe how we should treat others making links with the diverse modern society we live in.</li> <li>*To celebrate the uniqueness and innate beauty of each of us.</li> </ul>
<b>Year Five</b>	<b>God loves us in our changing bodies and development</b>	<ul style="list-style-type: none"> <li>* To show knowledge and understanding of emotional relationship changes as we grow and develop.</li> <li>* To show knowledge and understanding of the physical changes in puberty.</li> <li>* To celebrate the joy of growing physically and spiritually.</li> </ul>
<b>Year Six</b>	<b>The Wonder of God's Love in Creating New Life</b>	<ul style="list-style-type: none"> <li>*To develop a secure understanding that stable and caring relationships, which may be of different types, are at the heart of happy families.</li> <li>* Explain how human life is conceived.</li> <li>* Show an understanding of how being made in the image and likeness of God informs decisions and actions when building relationships with others, including life-long relationships.</li> </ul>